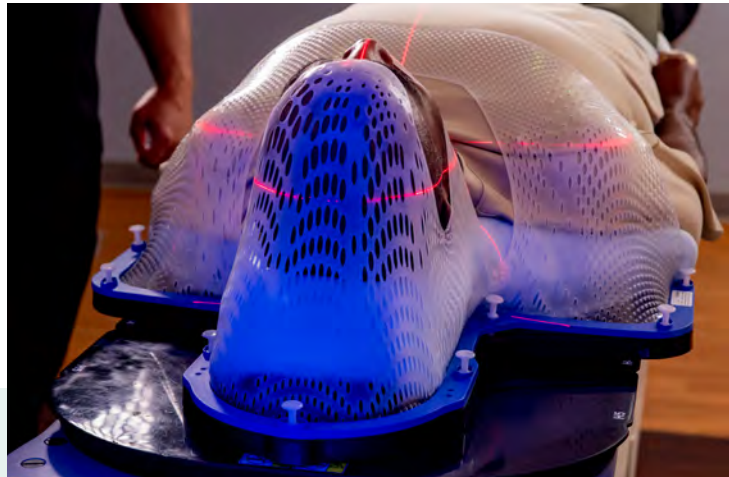


## Designed for Precision. Built for Comfort.

Positioning shouldn't get in the way of care. Bionix® Thermoplastic Masks are engineered for control and confidence so you can focus on the treatment not the materials.

- Designed specifically to offer the **ultimate in patient comfort** with **exceptional rigidity and extremely low shrinkage**.
- Available in **multiple perforation styles** and **compatible with most baseplates**.
- Ergonomically designed for **patient comfort**.
- **Optimal molding time.**
- **Non-stick.**
- Options available that are **compatible with SGRT camera systems**.
- **Works seamlessly with Bionix accessories**  
TruGuard™ tongue and jaw positioners,  
MoldCare® pillows and Bionix headrests.



## **Contact Us**


Contact your Bionix sales rep, distributor of choice  
or call 1.800.551.7096 (US)





International: Contact your distributor or call  
+1 419.727.8421

Designed for patient comfort  
and treatment reproducibility.



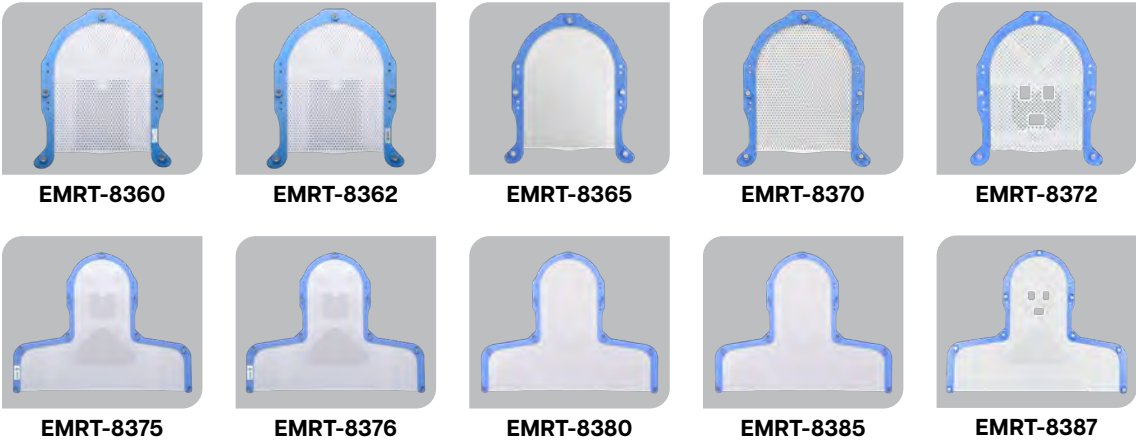
**Enhanced Solutions for  
the Fight Against Cancer**

 1670 Indian Wood Circle  
Maumee, OH 43537  
United States

 800.551.7096 (+1 419.727.8421)  
 800.455.5678 (+1 419.727.8426)  
 [bionix.com](http://bionix.com)  
 [bionix@bionix.com](mailto:bionix@bionix.com) ([international@bionix.com](mailto:international@bionix.com))

## Standard S-Frames

- EMRT-8360: 2.4mm, Head Only Reinforced S-Frame
- EMRT-8362: 3.0mm, Head Only Reinforced S-Frame
- EMRT-8365: 2.4mm, Head Only S-Frame
- EMRT-8370: 3.0mm, Head Only S-Frame
- NEW** EMRT-8372: 3.0mm, Head Only Reinforced Claustrophobic
- EMRT-8375: 2.4mm, Head & Shoulder Reinforced S-Frame
- EMRT-8376: 3.0mm, Head & Shoulder Reinforced S-Frame
- EMRT-8380: 2.4mm, Head & Shoulder S-Frame
- EMRT-8385: 3.0mm, Head & Shoulder S-Frame
- NEW** EMRT-8387: 3.0mm, Head & Shoulders Reinforced Claustrophobic



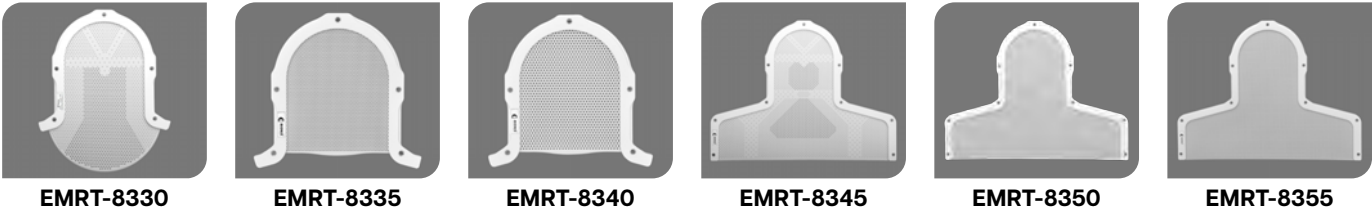
## Standard U-Frames

- EMRT-8300: 2.4mm, 10" x 10", Standard U-Frame
- EMRT-8305: 2.4mm, 10" x 12", Extended U-Frame
- EMRT-8310: 3.0mm, 10" x 10", Standard U-Frame
- EMRT-8315: 3.0mm, 10" x 12", Extended U-Frame
- EMRT-8320: 2.4mm, 10" x 10", Reinforced Claustrophobic U-Frame
- EMRT-8325: 2.4mm, 10" x 12", Reinforced Extended U-Frame



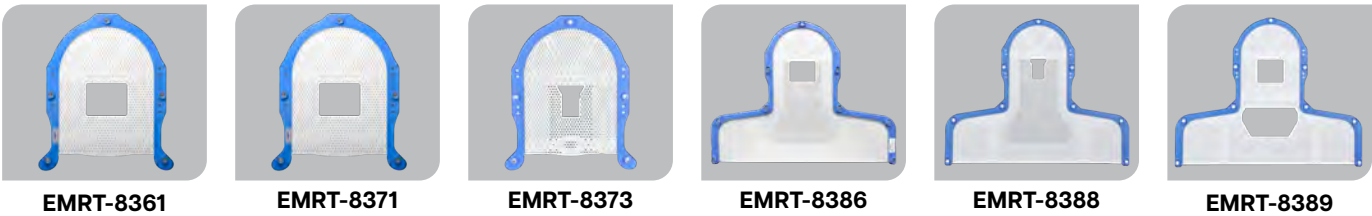
## VersaBoard Frames

- EMRT-8330: 2.4mm, Head Only Reinforced VersaFrame
- EMRT-8335: 2.4mm, Head Only VersaFrame
- EMRT-8340: 3.0mm, Head Only VersaFrame
- EMRT-8345: 2.4mm, Head & Shoulder Reinforced VersaFrame
- EMRT-8350: 2.4mm, Head & Shoulder VersaFrame
- EMRT-8355: 3.0mm, Head & Shoulder VersaFrame



## FreeView™ Open Face Masks (Compatible with VisionRT systems and OSMS products)

- EMRT-8361: 2.4mm, FreeView™ Head Only Reinforced S-Type
- EMRT-8371: 3.0mm, FreeView™ Head Only, Reinforced S-Type
- NEW** EMRT-8373: 3.0mm, FreeView™ Head Only, Small Opening, Reinforced S-Type
- EMRT-8386: 3.0mm, FreeView™ Head & Shoulder, Reinforced S-Type
- NEW** EMRT-8388: 3.0mm, FreeView™ Head & Shoulders, Small Opening, Reinforced S-Type
- NEW** EMRT-8389: 3.0mm, FreeView™ Head & Shoulders, Open Neck, Reinforced S-Type



## NEW Dry Heat Convection Oven, 120V

**Consistent, Even Heating for Reliable Mask Molding**  
Engineered for precision, the oven's advanced airflow control help achieve uniform heating of thermoplastic sheets and customizable mouth guards, supporting consistent form-fitting head and neck treatment setups that enhance reproducibility.

**Preprogrammed Settings for Workflow Efficiency**  
Save and name custom heating profiles for different mask types. With intuitive controls and programmable steps, therapists can streamline prep and reduce the chance of overheating or under-softening materials.

**Compact Ventless Design for Flexible Clinical Use**  
The oven's small footprint makes it easy to install in tight prep areas without the need for external ventilation, ideal for busy simulation rooms.





# Try These Accessories with Thermoplastic Masks



## TruGuard™ Tongue and Jaw Positioner

An easy-to-use, customizable tongue and jaw positioner for safe and effective treatment.

- Protects dental work from radiation
- Indexes both the top and bottom jaws of the patient
- Removes issues caused by pitching, even with patient weight variance



## MoldCare® Pillows

MoldCare Pillows available through Bionix® are a comfortable, precise patient immobilization device, offering a supportive, secure fit for radiotherapy patients.

- Ensures accurate, reproducible positioning for each treatment
- User-friendly design ensures quick setup
- Designed to allow high radiation permeability, ensuring treatments are delivered with precision and accuracy



Thermoplastic Masks - Distributed by Bionix, LLC.  
See product labeling for manufacturer information.

Refer to the package insert supplied with product for specific information on indications for use, contraindications, warnings, and precautions.

All trademarks are property of their respective owners and are used with permission.

©2025 Bionix LLC | MKT-0320 | Rev. 01



Enhanced Solutions for  
the Fight Against Cancer

1670 Indian Wood Circle  
Maumee, OH 43537  
United States

800.551.7096 (+1 419.727.8421)  
800.455.5678 (+1 419.727.8426)  
bionix.com  
bionix@bionix.com (international@bionix.com)